

# ESTATE AUCTION

Sale location - I-35 MN Exit #195, go Northeast on St Hwy 23 about 18 miles to town of Kerrick MN. Go east over railroad tracks to 2nd Avenue, go east to # 5366 and #5368. Address: 5368 2nd Avenue, Kerrick Mn 55756. Lunch sold on grounds - Watch for auction arrows.

**SATURDAY, SEPTEMBER 13, 2014 • 10:00 A.M.**  
**REAL ESTATE OFFERED AT 12:30 P.M.**

## REAL ESTATE OFFERED AT AUCTION

**Former Pine County Hwy Dept garage and former St. Michael's Church in the small town of Kerrick.**



**Former Pine County Hwy garage:** address of 5366 2nd Avenue; Parcel Id number: 415014000: section 35 twp 45 range 18 townsite of Kerrick, about .8 acre, part of lot 1, 2 and 3 block 6, shed measures 24x64, has newer electric, large overhead door. Please note that vacated alley in between parcels will be sold with the lots also.

**Former St. Michael's Church:** address of 5368 2nd Avenue; parcel id number: 415011000: section 35 twp 45 range 18 townsite of Kerrick .48 acre, lots 1-5. Church has large sanctuary, one main floor bedroom and 3/4 bath; basement has one bedroom, full bath, living room, dining room and kitchen. This building has newer roof, siding, windows, newer septic, electric and furnace. Many renovations have been done to both buildings. **Parcels combine to equal about 1.4 acres; see pictures online.** MLS information : church MLS # 4511106; former county garage MLS# 4511114

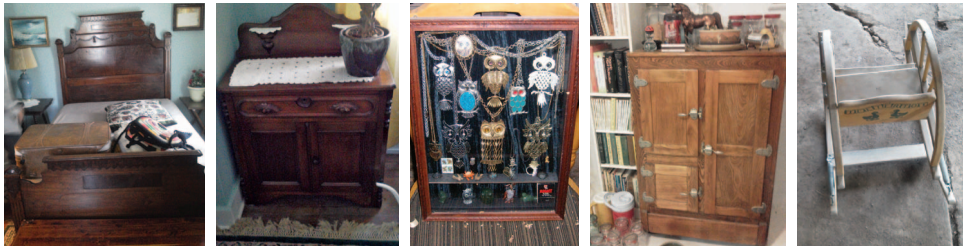


Real estate terms : Real estate offered at live auction - Buyers will need to bring to auction \$2500, for earnest money to receive bidding number, which will be non-refundable in the event buyer does not perform to terms of real estate purchase. There is no buyer's premium. All property to be sold in "as is" condition. All real estate is based on seller confirmation the date of auction. Broker/agent participation is welcome. Split of commission is at 3%. Brokers and agents need to show property prior to auction date to receive compensation. Seller will provide disclosures on the property. Closing to take place within 30 days of accepted offer to close with attorney John Warp.

## OPEN HOUSE SCHEDULE

**Friday, August 22, from 3:00 PM to 6:00 PM.**  
**Sunday, September 7, at 11:30 AM to 1:30 PM,**  
**or by appointment. Call Doug - 1-320-630-6651.**

## ANTIQUES & COLLECTIBLES



Wood chest of drawers; wood bed very ornate with matching chest of drawers and vanity; square trunks; round top trunks; steel frame beds; mirrors; school desk; refinished oak ice box; old GE refrigerator; Farmers Almanacs from 1980-2014; books (all types and subjects, old and new); Kodak slide projector with screen and trays, works; How-To books; rocking chairs; glass jar wood paddle butter churn; copper boiler and lid; Miller Beer cooler; enamelware; ornate chairs; drop leaf table; high boy china hutch and cabinet; small wood writing desk; book cases; linens of all types; large ice tongs; single man large ice saw; sprinkler cans; occasional tables; gate leg table; stands; ornate Victorian couch re-upholstered; 2 needle point ornate chairs; license plates; coal pail; old city Christmas lights; wall plates; milk cans; wire bound baskets; cast iron Warm Morning free standing wood stove; kerosene freestanding cook stove; library card catalog cabinet; pigeon hole wood box; brass leg flag pole stands; poles; flags; pine cone wreaths; galvanized wash tubs; old scales; Hardman and Peck upright piano-needs restoring; kids runner sleigh; garden tools; marbles; stones; wash boards; saurkraut cutter and stomper; bread-raising pan; 2 treadle sewing machines; wood carpenter tool chest; church altar from St. Michael's Church; wood communion box; floor lamps; Harry Potter dvds and collectibles; pictures; table linens; doilies; short height old library table; area rugs and runners; 5 ft curved oak church pew; 33 rpm records; Owl collection includes figurines; tapestry; jewelry over 700 pieces; nativity sets; ribbon and bow; miniatures; old church lights and fixtures; kerosene lamps; lanterns; butterfly chairs; St. Francis statue; bird baths; Virgin Mary statue; Waterford crystal Christmas ornaments and other pieces; US Limoges dish set, Toledo delight pattern; Polish china dishes set; set of china tableware (sets are service for 8); antique silver plate flatware set; silver tea service; cobalt blue pieces; copperware items; bird bath; hand-crocheted dolls; small water fountains; Lord of the Rings collectibles; craft materials; metal cash boxes; console radio stereo with turntable cabinet style; curved front chest of drawers; oak glass ball foot plant table; clothes rack; brass horse kids toy; kids runner sled; kids rocker bounce wood toy; piano stool; village churches.



## VEHICLE/SPORTING ITEMS



1989 Ford E-250 cargo van, rebuilt 302 V8 w/auto transmission, AC, new tires, new brakes and more, very clean unit; new motorcycle helmet; Small game traps; Schwinn collegiate bicycle single speed adult; Stewart 3 wheel bicycle just like new; Raleigh 5 spd adult bike.

## HOUSEHOLD

Whirlpool electric range; washer and electric dryer; apartment size refrigerator; shelving; small household appliances; knick-knacks; luggage; china hutch; videos; DVD's; pots and pans; storage containers; Whirlpool 12cu. ft chest freezer; canning items; jars; tv's (one with dvd player, one with video player, and 2 others); dining table with 3 leaves and 4 chairs (dark wood); large light wood dining table with 6 chairs; corner china hutch, lighted; box fans; Kirby Heritage vacuum cleaner; electric fireplace in wood cabinet; poplar desk; grandfather clock; occasional tables; plant stands; Christmas trees and decorations; large cedar chest; Sewing machines, 2 electric; handicap items; electric heaters; fans; bake ware items; books; many more items too numerous to mention.

## SHOP TOOLS

Skil saws; electric drills; hammers; socket sets; open-end wrenches; hammers; pliers; oil; nails; screws; bolts; storage cabinets; log chains; assortment of hydraulic jacks; numerous hand tools; clevises; masonry tools; extension cords; cables; section of scaffolding; electric stapler; roto zip; Mastercraft wood chop mitre saw; tool benches; cabinets; storage containers; hand brace and bit set; belt and disc sander; 20 ft fiberglass ladder; and other ladders; 1/2 hp bench top grinder; 300 ft tape measure; assorted rough sawn and planed lumber. **THIS IS ONLY A PARTIAL LIST.**

## LAWN & GARDEN

Snapper rear engine riding mower-28 inch cut, very clean; Cub cadet push mower, just like new; Husquvarna reel mower; Stihl 18 inch electric chain saw; Stihl fs 40 c gas weed trimmer; Troy Bilt Bronco rear tine tiller; 8 inch cordless weed trimmer; wood Adirondack chair; wooden garden bench; Snapper 8 hp 26 inch cut snow thrower, very clean; garden hose; garden tools; garden work stand; 6ft steel fence posts; patio furniture; cast iron park bench.



**Auctioneers Note : A great get away - Small town atmosphere - Close to Nemadji State Forest, Oak Lake, and Banning State Park - Many renovations done- Just needs the finishing touches on this historical property - Should be something for everyone at this auction . Any questions, call Doug 1-320-630-6651**

## JOHN WENZEL ESTATE

AUCTION TERMS: Cash or good check. Everything sold "as is." Everything must be settled for before being removed from the premises, bidding by numbers only. Buyers are responsible for the items they purchase. Statements made the day of auction take precedence over all printed material. Owners not responsible for accidents.



**Auctioneer: Doug Maser, #33-24, 320-630-6651**  
**Guest Auctioneer: Wes Bramer, #5806002, 320-629-5322**  
**View photos online at: [www.amazingauctions.us](http://www.amazingauctions.us)**  
**[www.midwestauctions.com](http://www.midwestauctions.com) - click on Amazing Auctions**

