

**Bruno Area
ESTATE**

AUCTION

Saturday, May 11, 2024 • 9:35 am

SALE LOCATION: WATCH FOR AUCTION ARROWS

52796 Starch Road, Bruno, MN -- Please use Map Quest for directions

LUNCH SOLD ON GROUNDS

TRACTORS AND FARM RELATED ITEMS



Case 611 Bb tractor with Paulson hyd. loader, has 3 point dual speed
W/C Allis Chalmers tractor, needs to be restored, in shed has hydraulics
6 ft. 3 point back blade

6 ft. 3 point brush cutter
Please note both tractors have good tires
2 wheel 6x8 trailer, 4 wheel wagon running gear
Assortment of scrap iron

4 WHEELER & SPORTING ITEMS

2000 Polaris 335 4 wheeler, 4 stroke, 4x4, has winch and snow plow
12 ft. aluminum Crestliner boat and home built trailer
Snap together duck decoys
Fishing items
Fold a sled – snowmobile sled



SHOP TOOLS

Pro tech 10 inch table saw
Craftsman radial arm saw
Craftsman table top scroll saw,
½ hp bench top grinder
Nuts and bolts
Plumbing and electrical supplies
Storage cabinets
Large bench vise
Nails
Assortment of hand tools
Oils and lubricants
Assortment of ladders

HOUSEHOLD ITEMS

Small household appliances
Wall hangings
Chest of drawers
Knick knacks
Doll display cabinets:
please note dolls will not be sold only for picture purposes
Husqvarna
Viking Sewing embroidery machine with electronic settings very nice unit



Area rugs
Linens of all types
End tables
Storage cabinets

LAWN & GARDEN

Cub Cadet 1050 riding mower with 23hp Kohler and 50 inch cut
Gas weed trimmers
Lawn and garden tools
Fencing items, barb wire, posts
DR brush cutter
mower 5 hp engine



Auctioneers note: This is an approximate list, more items than what is listed.
Nice clean 611 case tractor, nice assortment of lumber and a good mix of antique items.
See auction and photos online at www.midwestauctions.com or amazingauctions.com
Please note: Please follow all Covid 19 regulations, do not attend if not feeling good and wear a mask if needed and keep social distance.

Don't miss this estate auction.

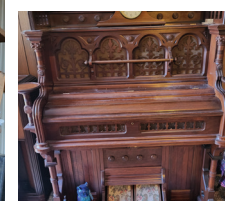
ANTIQUES AND COLLECTOR ITEMS



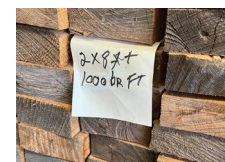
Kitchen Hosiery cabinet
Pump organ
Glass paw piano stool
wash basin cabinet
Chest of drawers
Log stamp in log
Treadle sewing machines
Enamel green colored gas kitchen stove
Old chairs
Small cast iron kids stove
Red wing dish set see pictures

Pfaltzgraff dish set
Assortment of crocks
Face figurines, see photos
Red Owl store tin items
Kitchen utensils
Land O Lakes serving tray
Old wood Hamm's beer box
Other old wood boxes
Depression glass items
Pepsi pop cooler top lid
State spoon set on wall hanging board
Storage trunks
Mini china sets
Tea cup and saucers
Horse eveners

Horse collar
Horse leather related items
Wrought iron bed frames
Steel implement wheels
Kitchen cabinet appliance trio, has range, refrigerator and sink all in one unit see picture



LUMBER



Rough sawn planed lumber
Ash rough sawn planed lumber, 2x4, 2x6, 1x6 and other dimensional lumber see pictures

View more photos at midwestauctions.com and www.amazingauctions.us



Maurice Olsen Estate, Owners
Doug Maser Auctioneer: Lic #33-24, 320-630-6651
www.midwestauctions.com - click on Amazing Auctions
If you have any questions or would like to preview any items give Doug a call
(320) 384-7132 • Cell: (320) 630-6651 • doug@scicable.com